

Item #: _____ **Qty #:** _____

Model #: _____

Project #: _____



9-OP-20 shown with optional faucet, hose & hanger

Floor Mounted



9-OP-20



9-OP-40

FEATURES:

Floor mounted unit eliminates the need of lifting heavy containers. No-Drip die formed recessed V-edge on three sides with a tile edge furnished on the rear.

Sink Bowl is seamless and is **Deep Drawn** designed.

Deep Drawn bowls having large liberal radii with a minimum of 3" and rectangular in design for increased capacity.

CONSTRUCTION:

All TIG welded.

Welded areas blended to match adjacent surfaces and to a satin finish.

MATERIAL:

Heavy gauge type "304" series stainless steel.

FEATURES:

Leg mounted design.

High back splash.

8-OP-16 feature seamless, one piece bowl **Deep Drawn** design.

Deep Drawn bowls having large liberal radii with a minimum of 3" and rectangular in design for increased capacity.

CONSTRUCTION:

All TIG welded.

Welded areas blended to match adjacent surfaces and to a satin finish.

MATERIAL:

Heavy gauge type "304" series stainless steel.

Conventional



8-OP-16

Economy



4-OP-18



K-240



K-242



K-245 & K-246



K-244

REQUIRED ACCESSORIES

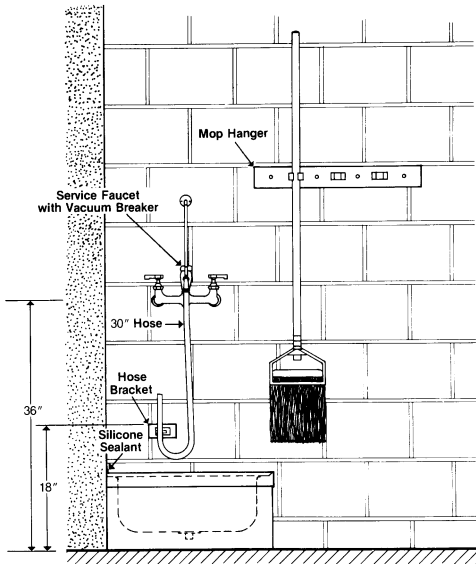
	Model #	Qty
Service Faucet	K-240	
Mop Hanger	K-242	
Hose & Bracket	K-244	
Utility Shelf	K-245	
Utility Shelf	K-246	

DIMENSIONS

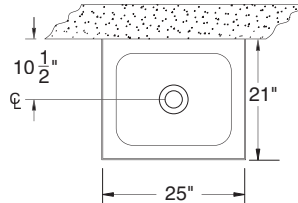
TOL Overall: ± .500"
Interior: ± .250"

ALL DIMENSIONS ARE TYPICAL

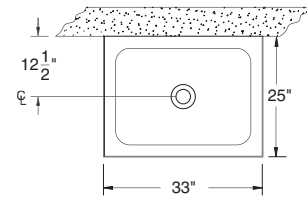
SUGGESTED INSTALLATION



- 9-OP-20:** 16" x 20" x 6" Bowl with 10" Overall Height.
- 9-OP-28:** 20" x 28" x 6" Bowl with 10" Overall Height.
- 9-OP-40:** 16" x 20" x 12" Bowl with 16" Overall Height.
- 9-OP-48:** 20" x 28" x 12" Bowl with 16" Overall Height.

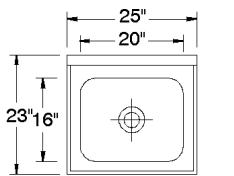
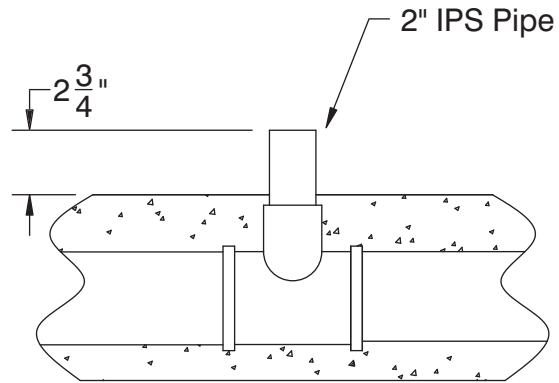
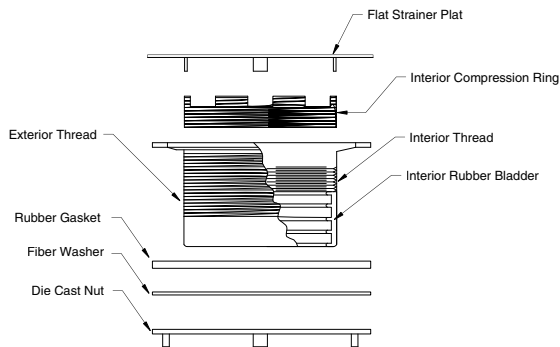


9-OP-20
9-OP-40

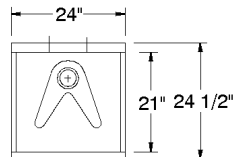
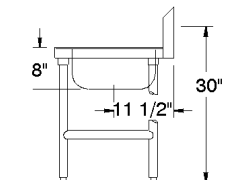
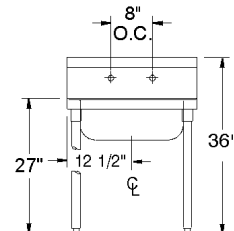


9-OP-28
9-OP-48

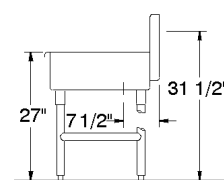
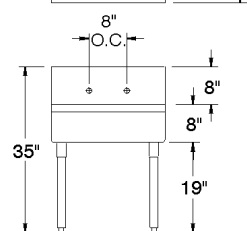
MOP SINK DRAIN ASSEMBLY



8-OP-16
CONVENTIONAL DESIGN



4-OP-18
ECONOMY DESIGN



1 1/2" IPS

